

# OARE GUNPOWDER WORKS

## Educational Opportunities

[www.gunpowderworks.co.uk](http://www.gunpowderworks.co.uk)



We encourage  
litter free  
lunches



### Other information:

Our generic activity risk assessment can be downloaded from our website, alongside our 'Code of Practice and safety advice' document and our cancellation policy. Worksheets and information sheets are available also. Schools can bring along their own dataloggers to support habitat sessions.

### Costs:

SECONDARY	Full Day (per pupil)	Minimum charge	Half day (per pupil)	Minimum charge
Winter Charges (Sept – March)	£3.90	£78.00	£2.75	£55.00
Summer Charges (April – August)	£5.00	£100.00	£3.75	£75.00

### Unsupervised visits:

You can opt for an unsupervised visit, where you are free to take your class around the site independently and use materials provided on the website. However please be aware of all the health and safety issues listed below and complete your own risk assessment prior to the visit. We ask that you still complete a booking form and inform the Education Officer at Groundwork Kent & Medway.

If you would like the visitor centre to be opened during your visit, giving you access to the classroom, toilets and indoor interpretation, please indicate this on your booking form and we can then arrange for someone to open up the facilities during your visit. Please note there will be a charge of £25 for this.



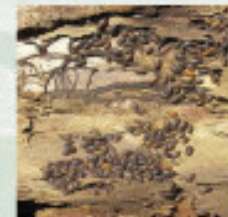
# Secondary School

## Areas of Study at

# OARE

# GUNPOWDER WORKS

# COUNTRY PARK



Contact: Education Officer  
Groundwork Kent & Medway  
48 Canterbury Street, Gillingham,  
Kent. ME7 5UN

Tel: 01634 855166 Fax: 01634 855177

[www.gunpowderworks.co.uk](http://www.gunpowderworks.co.uk)



## Key Stage 3 and 4

\*\* Please note that on average one area of study will take up half the day unless specified, so please choose two focus areas for a whole day. Please discuss any specific activities or focus areas with the education tutor before the visit.\*\*

### Habitats – Pond

The lower mill pond supports a wide range of plants, animals and insects which can be studied during a pond dipping session. Pupils use the nets provided to catch their creatures. These can then be sorted and identified using simple keys and can be closely observed with the use of magnifying glasses and the microscope. The pond habitat, adaptations, food chains and webs can be looked at in more detail back in the classroom.



### Habitats – Woodland & grassland

Pupils can carry out different types of habitat sampling such as using quadrats and systematic line transects; discussing the benefits and limitations pupils of each method and type of data produced. Pupils will record plant species, their frequency and dominance for each area surveyed. Time dependent we can also look at the physical features of the habitat, constructing food chains and webs, looking species competition and the effect this can have on the habitat. Magnifying pots, ID sheets and sweep nets for grassland in the Summer are provided.



## A-Level and Diplomas \* Whole day activities

### Habitats – Pond

Students learn about different sampling methods, choosing the most appropriate for their survey. They will record the plant and animal species found in different areas of the pond. After sampling they will devise complex food webs and look at the trophic levels and energy transfer in this habitat. We will discuss damage that has been done to this environment and methods we could use to conserve it. Small groups will be able to carry out surveys of our leats water system to act as a comparison to the pond habitat.



### Habitats –Woodland & grassland

Students will be introduced to a wide range of sampling techniques including random sampling, systematic sampling and stratified sampling. This is a great opportunity to study all of these different methods and look at the limitations of each. We will also study the biotic and abiotic factors of these habitats and how this contributes to the organisms living there and how it can be conserved.



## Other areas of study for all Key Stages

### The History of Gunpowder Making at Oare

We look at the unique history of the site, what gunpowder is used for and how it was made. Pupils will go on a fascinating historical walk looking at the remnants of the buildings and machinery, used in different stages of the process. They will also see how gunpowder was moved around the site and the importance of the site's location. Pupils will also be able to view some of the artefacts found on site and the historical information panels in the visitor centre.



### Environmental Art



Pupils can explore the country park and collect materials suitable for collage work. This will vary according to the time of year you visit, but the pupils will get to create their own natural artwork outside. Alternatively you may like to take time sketching some of the buildings that remain or the flora and fauna.

### NEW for 2011

### Explore your senses

Pupils will get the chance to explore and learn more about the natural habitat at Oare, through a mixture of fun exploratory activities and environmental games. The activities will help them to use their senses to learn about the plants, trees and seeds and explore their natural environment.

This is a half day session, but can be combined with one of other activities sessions, to make a full day. Sessions will be adapted to suit the age -group .

\* Ideal for small groups

