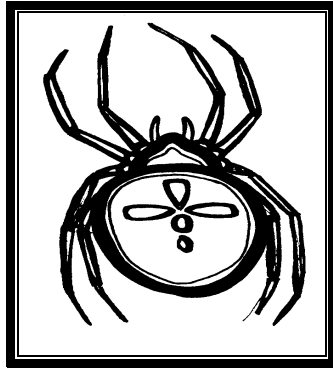


TG1 My minibeast databank display example

Teacher's note

This encourages students to become an expert about one minibeast, using both close observation and book and website research skills. Each child can contribute to the class data set display. This can be used to create an electronic data resource for the rest of the school.

My Garden Spider



(child's own drawing)

Fact file

Legs: 8

Animal group to which it belongs: *Arthropoda*

Body parts: 2

Colour: *Black*

Size: *Small - under 2cm in width and length*

They eat: *Insects and other spiders sometimes too! So it is a carnivore.*

They are eaten by: *Birds*

Habitat found: *Woodland - I found it crawling on a fence.*

Other interesting facts - Did you know?

- *Most spiders are harmless and will only bite if handled roughly and even then spiders find it difficult to pierce through human skin.*
- *Silk used to make webs is produced in the abdomen and then released through three pairs of spinners, which you can see on some spiders.*

A food chain involving a spider:

Sun → Leaf → Insect (fly) → Spider → Bird

TG1 My minibeast databank

My



(your own drawing)

Fact file

Legs:

Animal group to which it belongs:

Body parts:

Colour:

Size:

They eat:

They are eaten by:

Habitat found: .

Other interesting facts - Did you know?

A food chain involving a

Sun → Leaf → Insect (fly) → Spider → Bird